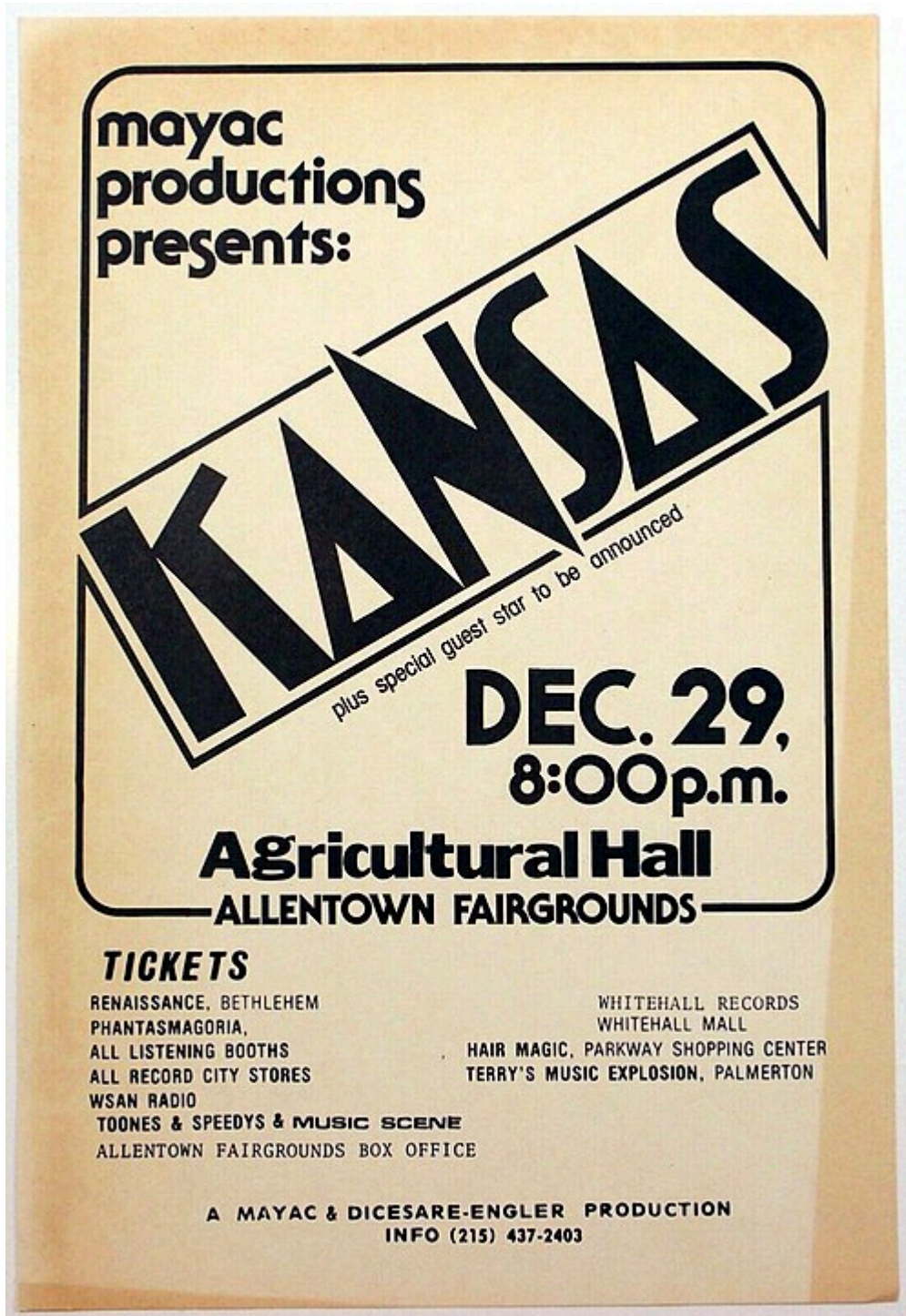


"Carry On Wayward Son" by Kansas



Since its release in 1976, "*Carry On Wayward Son*" has become a true rock legend, a song that still resonates in the hearts of music enthusiasts today. This emblematic single by the band **Kansas** has made its mark in music history and left an indelible footprint.

"Carry On Wayward Son" was written by guitarist Kerry Livgren, a member of the Kansas band. The song appeared on the album "*Leftoverture*," which propelled Kansas onto the international music scene. It immediately captured attention with its powerful guitar riffs, enchanting vocal harmonies, and profound lyrics.

The song tells the story of a lone traveler questioning the meaning of life and seeking to find their place in the world.

The introspective and poetic lyrics evoke universal themes of self-discovery, overcoming adversity, and perseverance. "Carry On Wayward Son" has become an anthem for those searching for deeper meaning in their existence.

Formed in 1970 in Topeka, Kansas, the Kansas band consists of talented members who skillfully blend progressive rock, hard rock, and symphonic rock to create a unique sound. Alongside Kerry Livgren, the band includes vocalist Steve Walsh, violinist and keyboardist Robby Steinhardt, guitarist Rich Williams, bassist Dave Hope, and drummer Phil Ehart.

Kansas's success stems from their ability to create intricate and melodic compositions, combining grandiose orchestral arrangements with powerful electric guitars. Their energetic live performances and distinctive sound won over audiences, earning them a significant place in rock history.

"Carry On Wayward Son" propelled the band to new heights of popularity, reaching the top 20 of music charts and becoming a staple on the radio. The song has since become one of Kansas's greatest hits and is often regarded as their signature piece.

Over four decades since its release, "Carry On Wayward Son" continues to captivate Kansas fans and win over new listeners across generations. Its catchy melody, inspiring lyrics, and exceptional musical arrangement make it a timeless work.

The song has also gained global recognition through its inclusion in numerous film soundtracks, television series, and video games. It has become a true anthem, transcending boundaries and inspiring listeners around the world.

In conclusion, "Carry On Wayward Son" remains an iconic masterpiece that encapsulates the essence of Kansas's musical journey. Its impact on the rock genre and its enduring popularity testify to the band's musical prowess and the song's timeless appeal.

Sources

- chat.openai.com

Music - 22 juin 2023 - Rael2012 - CC BY 2.5